

Work clothes  
as they should  
be

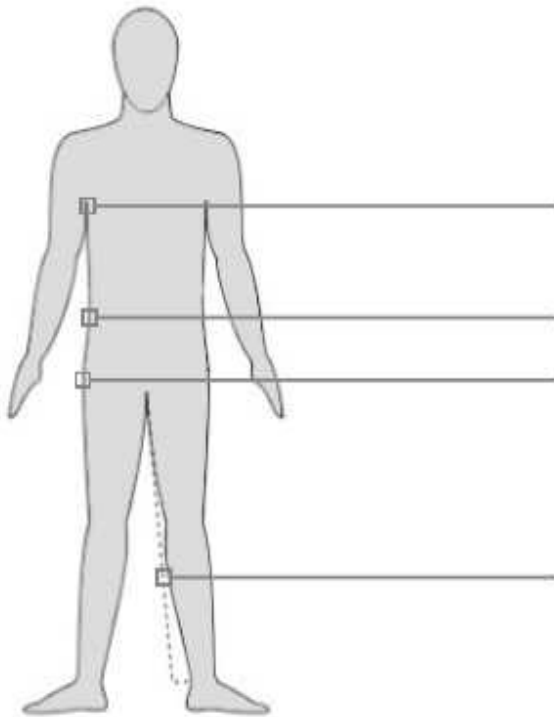


The size guide below is a help in choosing the right size of clothing.

The size is best taken on the skin or thin clothes.

The measuring tape must not be pulled too tightly and must always remain horizontal.

## SIZE GUIDE



### bust width

the largest size of the chest, just under the armpits

### waist width

the smallest size, between the chest and hips

### hip width

the largest size of the hips

### inner leg length

the highest point between the legs to the heel

XS – 3XL*	XS		S		M		L		XL		2XL		3XL	
44 – 64*	42	44	46	48	50	52	54	56	58	60	62	64	66	68
bust width	84	88	92	96	100	104	108	112	116	120	124	128	132	136
waist width	74	78	82	86	90	94	98	102	106	110	114	120	124	126
hip width	78	92	96	100	104	108	112	116	120	124	128	132	136	142
inner leg length	80	81	82	83	84	85	86	87	88	89	89,5	90	90,5	91

\*Jackets and dustcoats are available in sizes XS – 3XL

\*Bib & braces and trousers are available in sizes 44-64